



32NORTH



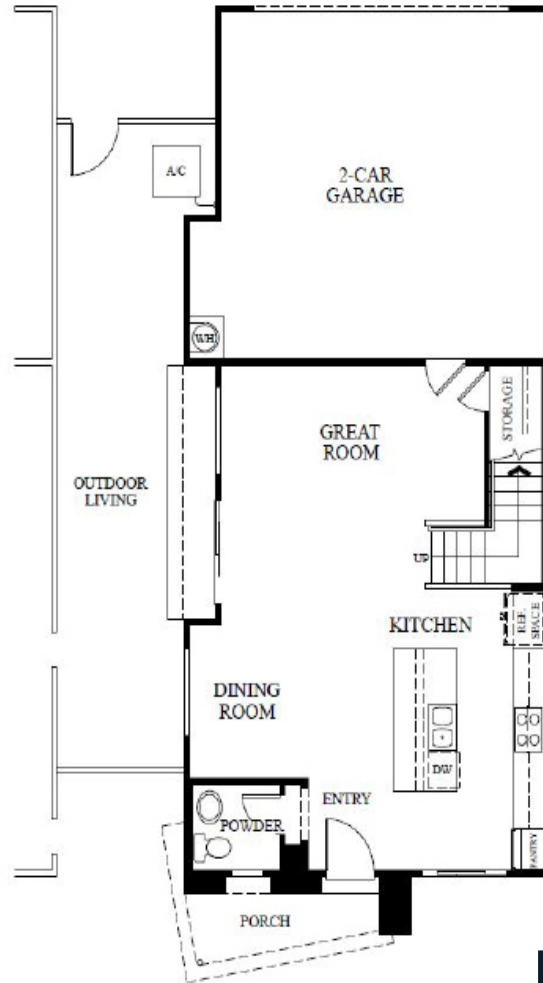
## 32 NORTH Plan 1



- ◆ Two-Story
- ◆ 1,717 sq. ft. (approx)
- ◆ 3 Bedrooms
- ◆ 2.5 Baths
- ◆ Two-Car Garage

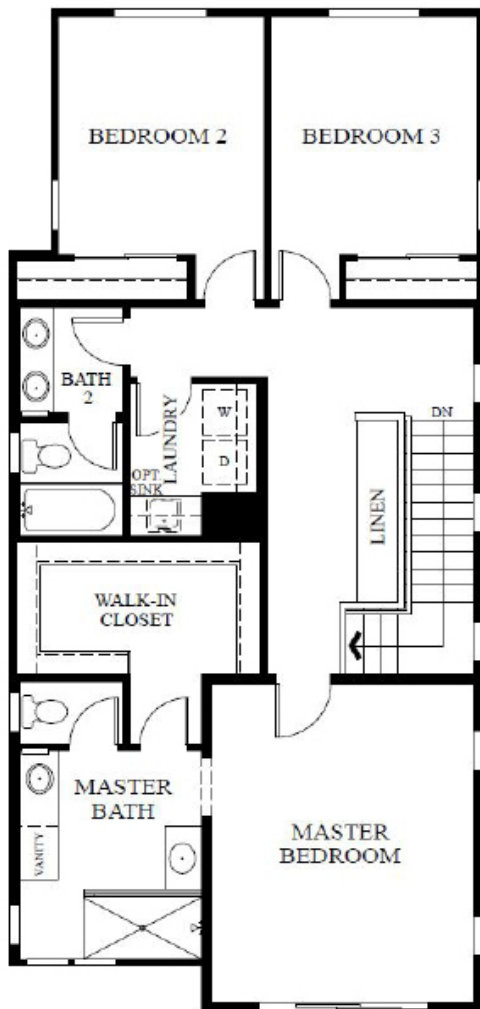


1st FLOOR



Plan 1

2nd FLOOR



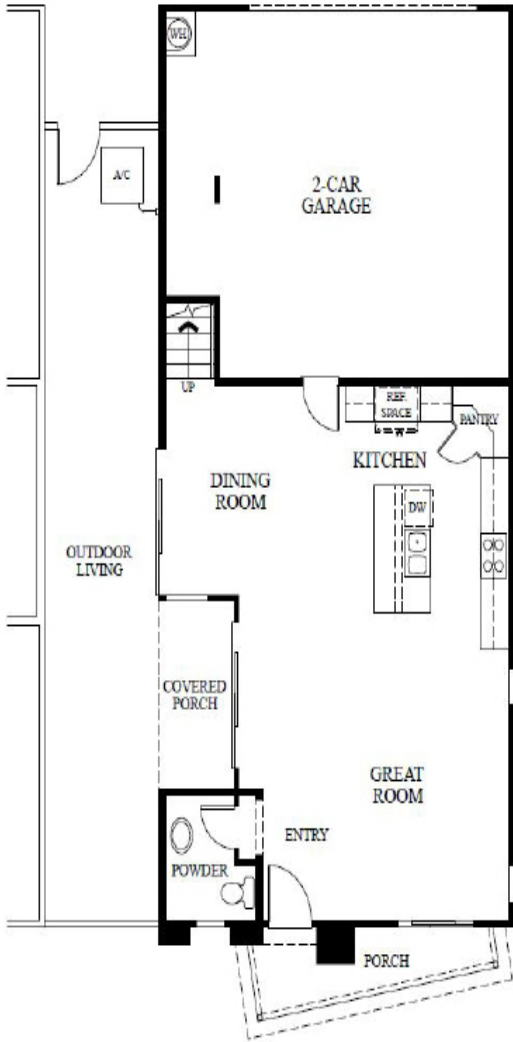
## 32 NORTH Plan 2



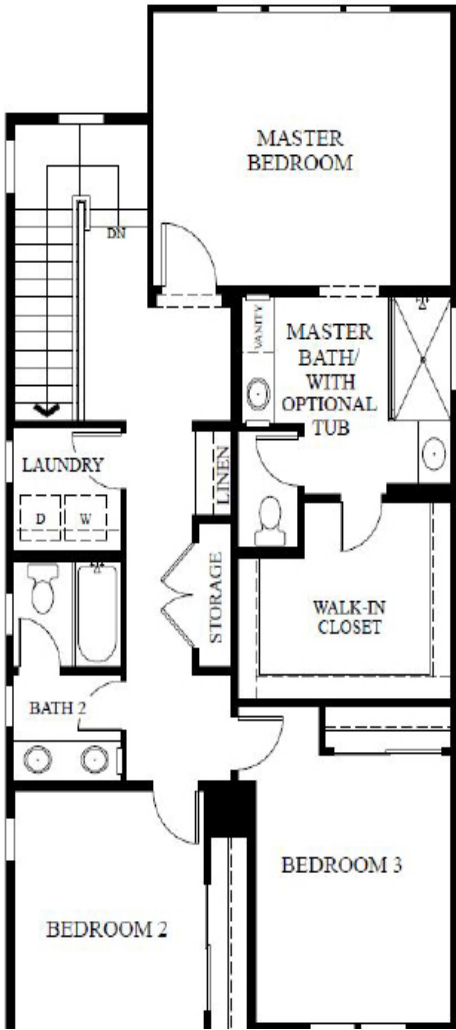
- ◆ Two-Story
- ◆ 1,890 sq. ft. (approx)
- ◆ 3 Bedrooms
- ◆ 2.5 Baths
- ◆ Two-Car Garage



1st FLOOR



2nd FLOOR



Plan 2



In our continuing effort to improve our product, Watt Communities of Arizona LLC reserves the right to make changes or modifications to plan specifications, materials, features, move-in dates or floorplans without notice. Square footages listed are approximate. Watt Communities, its contractors, subsidiaries, assigns or successors do not warrant its accuracy. No offer for sale or lease can be made, and no offer to purchase can be accepted prior to the issuance of the final Arizona Public Report, available at www.re.stat.az.us. Construction by WCA Development Services, Inc. R0C# 294976. Watt Communities of Arizona LLC is pledged to the achievement of equal housing opportunities. Information is deemed reliable as of 5/01/18.

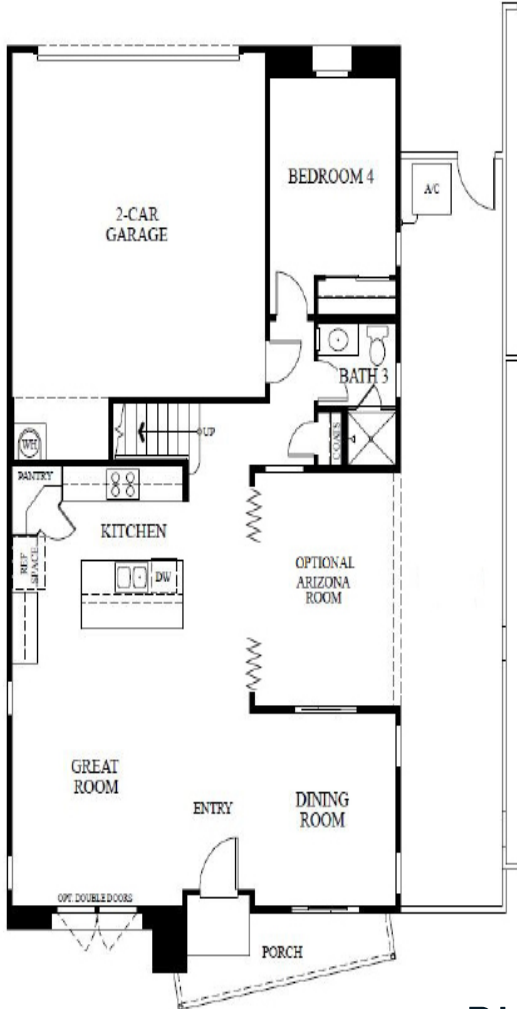
## 32 NORTH Plan 3



- ◆ Two-Story
- ◆ 2,301 sq. ft. (approx.)
- ◆ 4 Bedrooms
- ◆ 2.5 Baths
- ◆ Two-Car Garage

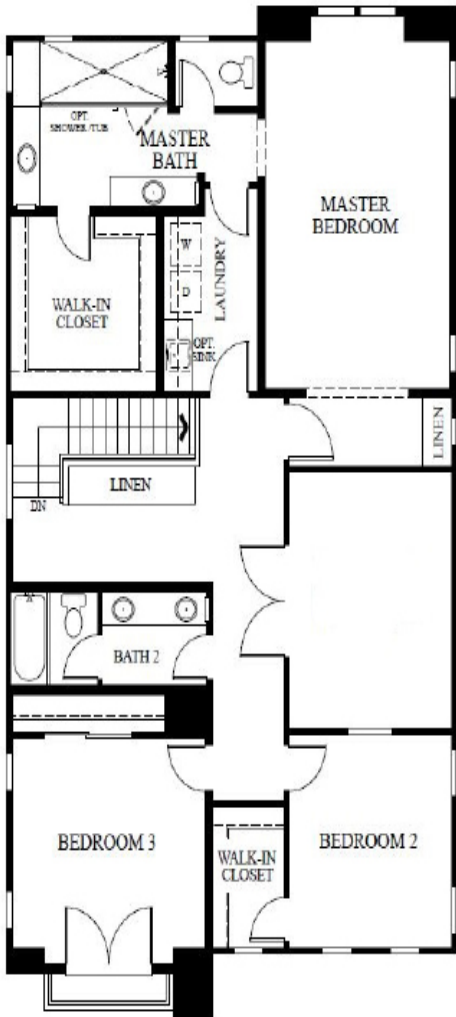


1st FLOOR



Plan 3

2nd FLOOR



In our continuing effort to improve our product, Watt Communities of Arizona LLC reserves the right to make changes or modifications to plan specifications, materials, features, move-in dates or floorplans without notice. Square footages listed are approximate. Watt Communities, its contractors, subsidiaries, assigns or successors do not warrant its accuracy. No offer for sale or lease can be made, and no offer to purchase can be accepted prior to the issuance of the final Arizona Public Report, available at www.re.stat.az.us. Construction by WCA Development Services, Inc. R0C# 294976. Watt Communities of Arizona LLC is pledged to the achievement of equal housing opportunities. Information is deemed reliable as of 5/01/18.

## 32 North

[www.wattcommunities.com](http://www.wattcommunities.com)

[32North@wattcommunitiesaz.com](mailto:32North@wattcommunitiesaz.com)

480-887-4933 press option 2

### OFFICE HOURS

Monday—Saturday: 10 AM - 6 PM

Sunday: 12 PM - 5 PM



11900 N 32nd St. | Phoenix, AZ 85028