



BILTMORE LIVING



BILTMORE LIVING

3-Plex



4-Plex



5-Plex

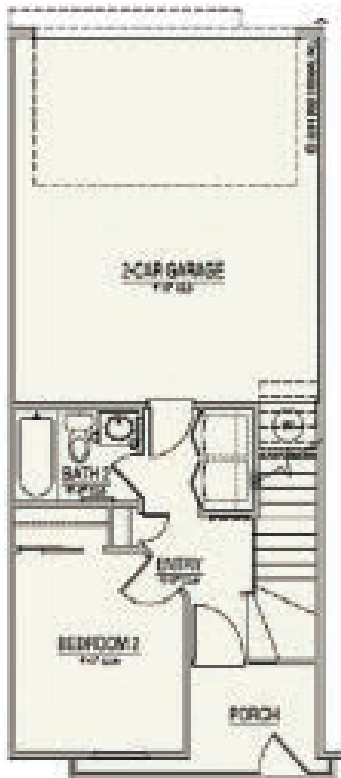


Site Plan

Biltmore Living is a thoughtfully planned 40-unit gated community, featuring a lush pool, spa retreat, multiple bike racks and an outdoor BBQ.



1st FLOOR



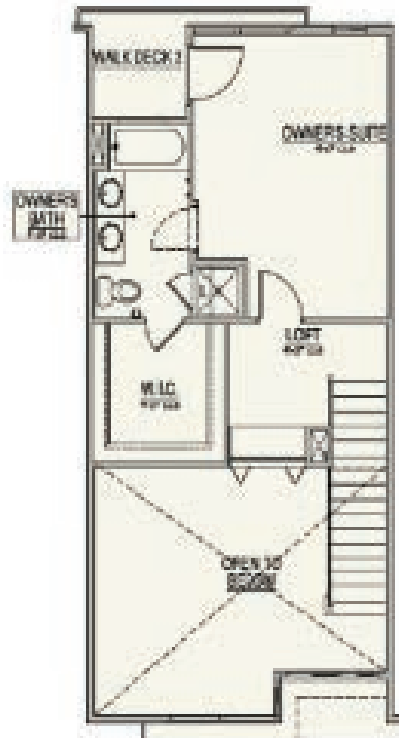
2nd FLOOR



- ◆ Three-Story
- ◆ 1,395 sq. ft.
- ◆ 2 Bedrooms
- ◆ 2.5 Baths
- ◆ Loft
- ◆ Two-Car Garage

Unit A

3rd FLOOR



In our continuing effort to improve our product, Watt Communities of Arizona LLC reserves the right to make changes or modifications to plan specifications, materials, features, move-in dates or floorplans without notice. Square footages listed are approximate. Floorplans and renderings are solely for illustrative purposes and should never be relied upon. This is not intended as a legal description and should not be relied upon. Watt Communities, its contractors, subsidiaries, assignors or successors do not warrant its accuracy. No offer for sale or lease can be made, and no offer to purchase can be accepted prior to the issuance of the final Arizona Public Report, available at www.re.stat.az.us. Construction by WCA Development Services, Inc. ROC# 294976. Watt Communities of Arizona LLC is pledged to the achievement of equal housing opportunities. Watt Communities New Leaf Biltmore, LLC reserves the right to make changes in plan specifications, materials and features without notice or obligation. All imagery is representational and does not depict specific buildings, views or future architectural, community or amenity details. Trust Realty Advisors, Inc AZ BRE# Co002614000. May 2018.



BILTMORE LIVING

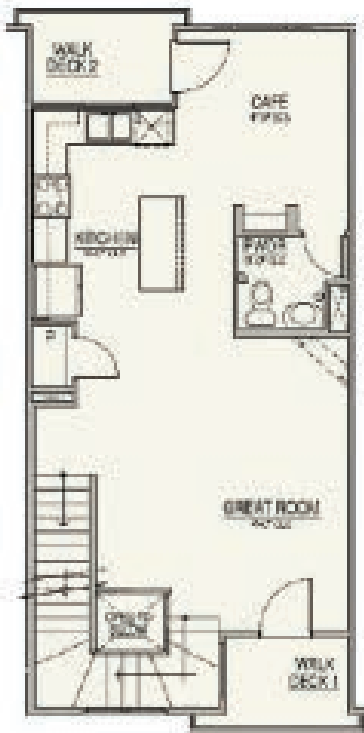




1st FLOOR



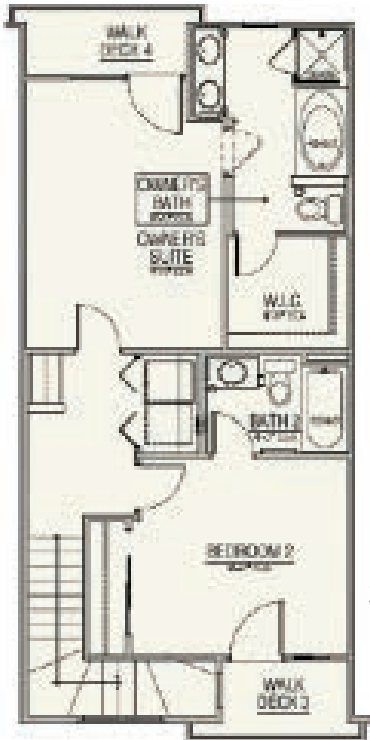
2nd FLOOR



- ◆ Three-Story
- ◆ 1,582 sq. ft.
- ◆ 2 Bedrooms
- ◆ Office/ Media Room
- ◆ 3 Baths
- ◆ Two-Car Garage

Unit B

3rd FLOOR



In our continuing effort to improve our product, Watt Communities of Arizona LLC reserves the right to make changes or modifications to plan specifications, materials, features, move-in dates or floorplans without notice. Square footages listed are approximate. Floorplans and renderings are solely for illustrative purposes and should never be relied upon. This is not intended as a legal description and should not be relied upon. Watt Communities, its contractors, subsidiaries, assignors or successors do not warrant its accuracy. No offer for sale or lease can be made, and no offer to purchase can be accepted prior to the issuance of the final Arizona Public Report, available at www.re.stat.az.us. Construction by WCA Development Services, Inc. ROC# 294976. Watt Communities of Arizona LLC is pledged to the achievement of equal housing opportunities. Watt Communities New Leaf Biltmore, LLC reserves the right to make changes in plan specifications, materials and features without notice or obligation. All imagery is representational and does not depict specific buildings, views or future architectural, community or amenity details. Trust Realty Advisors, Inc AZ BRE# Co002614000. May 2018.



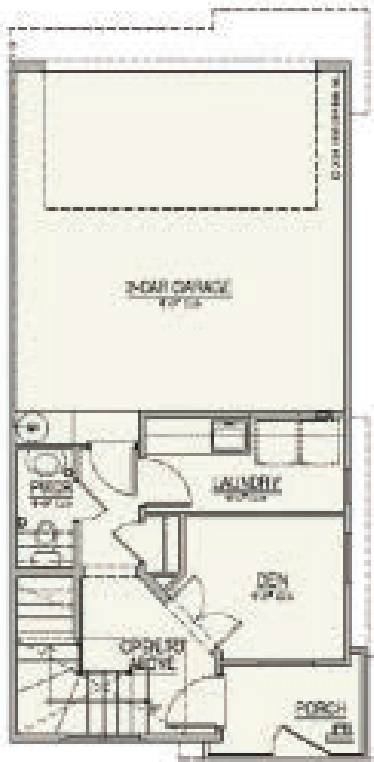
BILTMORE LIVING



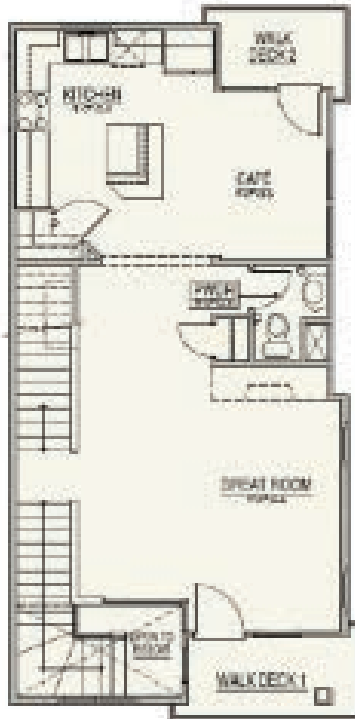
Interiors are model units for illustrative purposes. Furniture not included in purchase.



1st FLOOR



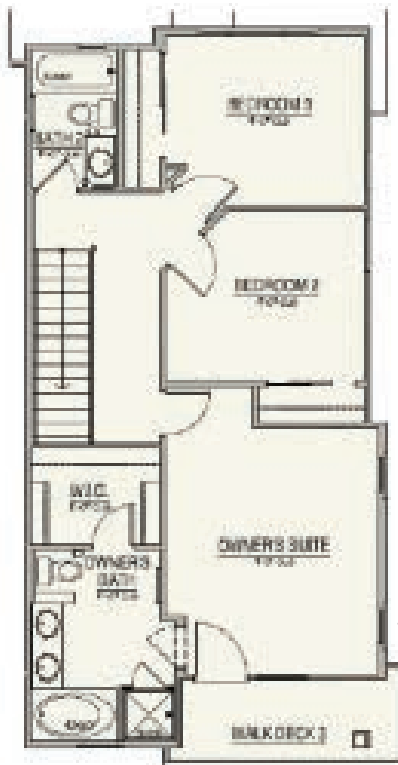
2nd FLOOR



- ◆ Three-Story
- ◆ 1,806 sq. ft.
- ◆ 3 Bedroom
- ◆ Office/Media Room option
- ◆ 2.5 Baths
- ◆ Two-Car Garage

Unit C

3rd FLOOR



In our continuing effort to improve our product, Watt Communities of Arizona LLC reserves the right to make changes or modifications to plan specifications, materials, features, move-in dates or floorplans without notice. Square footages listed are approximate. Floorplans and renderings are solely for illustrative purposes and should never be relied upon. This is not intended as a legal description and should not be relied upon. Watt Communities, its contractors, subsidiaries, assignors or successors do not warrant its accuracy. No offer for sale or lease can be made, and no offer to purchase can be accepted prior to the issuance of the final Arizona Public Report, available at www.re.stat.az.us. Construction by WCA Development Services, Inc. ROC# 294976. Watt Communities of Arizona LLC is pledged to the achievement of equal housing opportunities. Watt Communities New Leaf Biltmore, LLC reserves the right to make changes in plan specifications, materials and features without notice or obligation. All imagery is representational and does not depict specific buildings, views or future architectural, community or amenity details. Trust Realty Advisors, Inc AZ BRE# Co002614000. May 2018.



BITLMORE LIVING

www.wattcommunities.com/biltmore-living

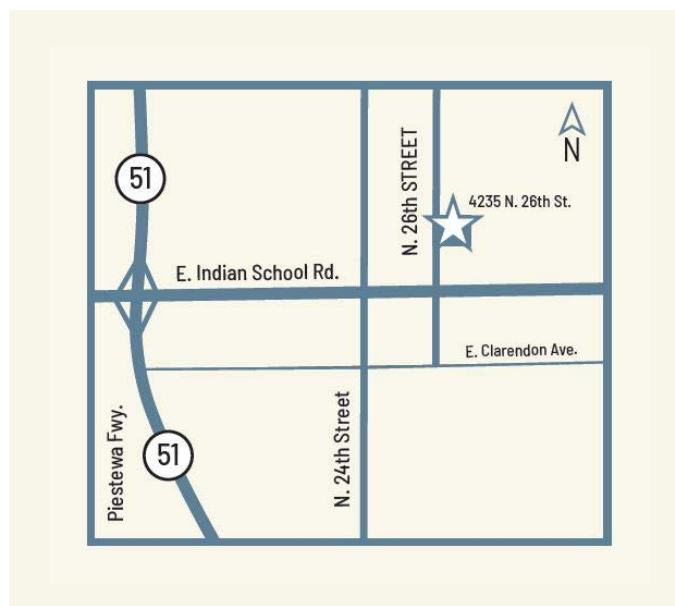
BiltmoreLiving@WattCommunitiesAZ.com

480-887-4933 option 1

OFFICE HOURS

Open Daily: 10 AM - 6 PM

Sunday: 12 PM - 5 PM



4236 North 27th St. & 4235 N. 26th St. | Phoenix, AZ 85016